

# Coatings Design™

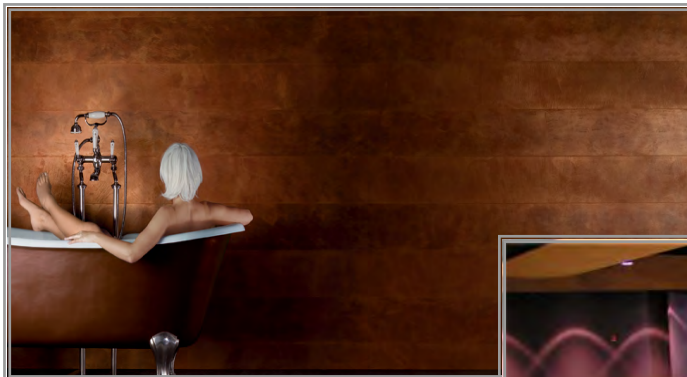
## Commercial projects or residential, expressive interior walls provide long lasting value

Triarch materials work well for the inspired. Not only a pretty face with an expansive color palette and a large variety of patterns, Triarch finishes are abrasion resistant and LEED compliant. Performance and aesthetics combine to make Triarch material an ideal choice for the discriminating designer, building operator, or homeowner. Performance finishes provide lasting value by keeping buildings looking newer longer. Studies show performance wall finishes can extend the time between renovations. Improved building aesthetics have a positive influence on occupancy rates and rental incomes. Whether a hospital-ity setting, a cultural center or upscale residential, Triarch material are original, creative and sensual. Triarch materials can deliver bold statement or subtle tailored ambiance, but always couched in a

foundation of long term performance. Lasting wall performance is not elusive, our finishes are: washable, scrubable, abrasion resistant, LEED compliant and mold resistant. Some of our finishes are also impact resistant. (see individual product data sheets for specific test standards and published results)

### Inside this issue:

Residential Venetian	2
Commercial Venetian	3
KLONDIKE	4
KLONDIKE LIGHT	5
Collection of JOY	6



Above: banding technique with subtle white gold  
Above right: Nashville residence with Spatula Stuhhi® Venetian Plaster with White Gold Glaze applied with the angel wing technique.  
Right: Performing Arts Center outside of Seattle.



# Polished Venetian Plaster — Residential

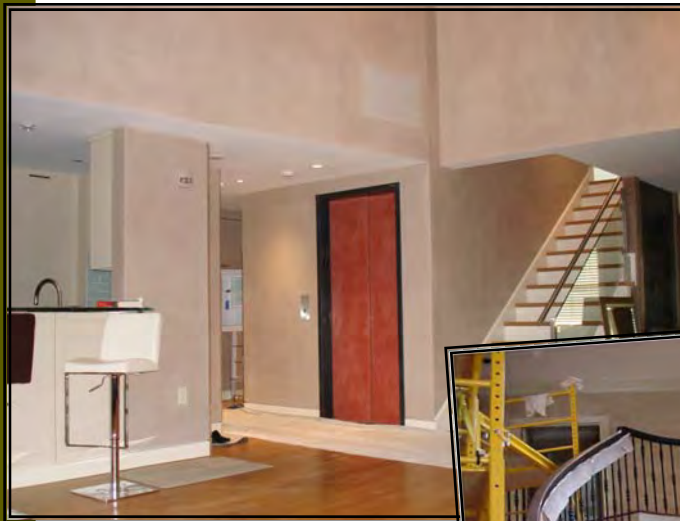
Spatula Stuhhi® branded Venetian Plasters are simply the best...world wide. The depth of color, the ease of spreading the plaster and the quality of the finish are some of the product characteristics that have designers and installers highly supportive of Spatula Stuhhi plasters.

Finish options are available in a wide range of visual effects. There is the high polish classic effect or a more subtle matte effect with either the OPACO™ or Spirito Libero™ Marmorino. Each effect may be further decorated with various metallic glazes, banding effects, or by using two or more colors of plaster into the finish coat. No doubt all Venetian Plaster applications require an installer of skill with a discerning eye for quality, however TRIARCH supports that process with an expanding list of artisan installers nationally. Ask for a listing of qualified installers in your area and live the life style of sophisticated interiors at work or at home.

Below: residences in Boston, Naples, & Houston in Spatula Stuhhi Classic. Right photo: texture is part of the Torn Stone™ collection



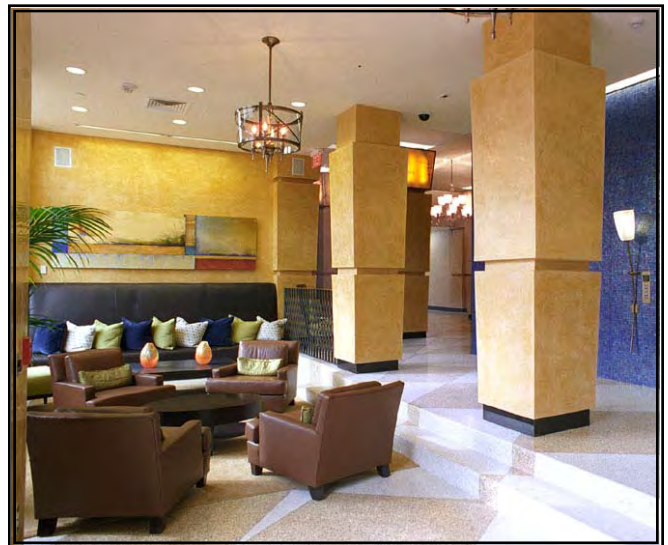
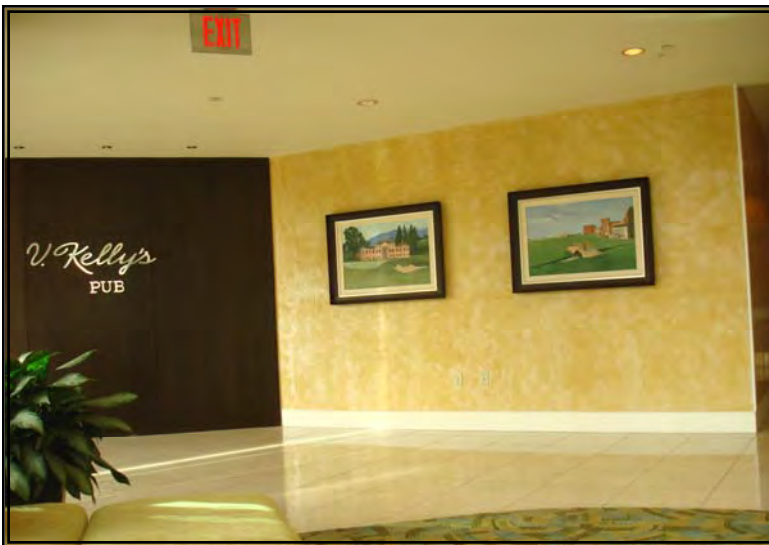
Multi-toned Spatula Stuhhi provides additional design options.



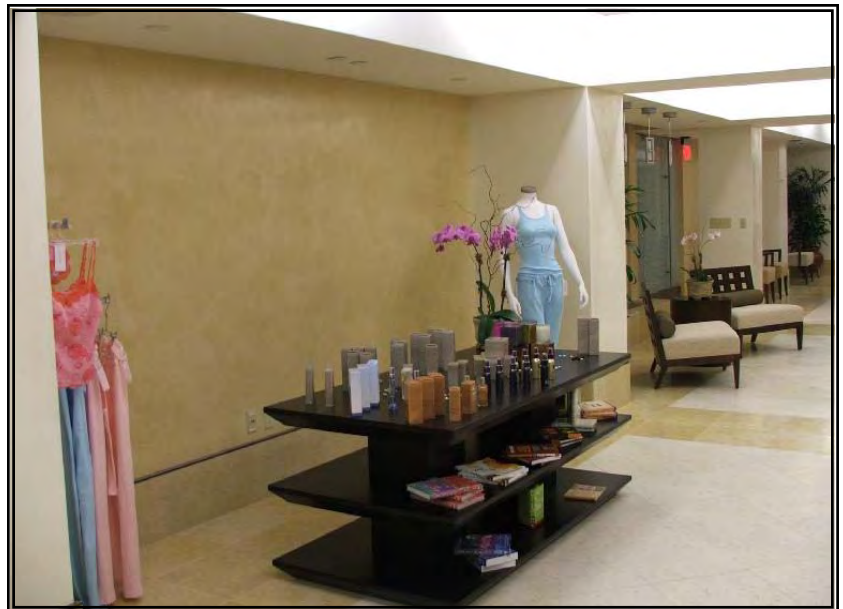
# Commercial Installations...Spatula Stuhhi works!



Call it Stucco Veneziano or Italian polished plaster, authentic Venetian Plaster provides an ambiance not achieved by other materials. Acrylic imitations of Venetian Plaster do not capture the feeling or tactile effect of authentic Venetian Plaster. Natural slaked lime plaster, such as Spatula Stuhhi, provides a natural, unique appearance and ambiance to interior space. Nothing cold or synthetic in the look or feel, all natural Spatula Stuhhi costs no more than acrylic imitations. Furthermore, natural lime plaster “breathes” allowing any moisture in the wall to escape and contributing to a positive IAQ. Stuhhi has almost zero VOCs, and the pH level of the plaster makes it highly mold and mildew resistant. Compare, you will see a positive difference. See more project photos on-line by scanning the QR code.



Above: Marriott Hotel public area, Jacksonville, FL Right: office lobby, Jackson, MS  
 Below: Applying natural wax sealer over blue Stuhhi., science building @ Regina University, Canada. Right below: Spa at Biltmore Resort, Miami



**Spatula Stuhhi works in hospitality, tenant finish, and large scale venues such as cultural centers.**

# KLONDIKE<sup>®</sup>

## Oxidized Metallic

**Klondike** delivers an elegant, unique, washable painted surface unlike any other. Klondike is easily applied by brush or plastic trowel, be it the homeowner or painting contractor. See our video to see how easy the installation of this material truly is.

Klondike is available in two different base colors, traditional darker toned Klondike or Klondike Light. Within the Klondike traditional line there are 48 color options and 57 in the Klondike Light collection. Some of the color options provide hints of gold or silver and oxidized metal effects. Additional design options include a STAR effect that adds a subtle sparkle to the wall. For higher traffic areas, we provide PolyGlaz<sup>®</sup> a scratch resistant clear coat; making Klondike suitable for busy commercial applications.



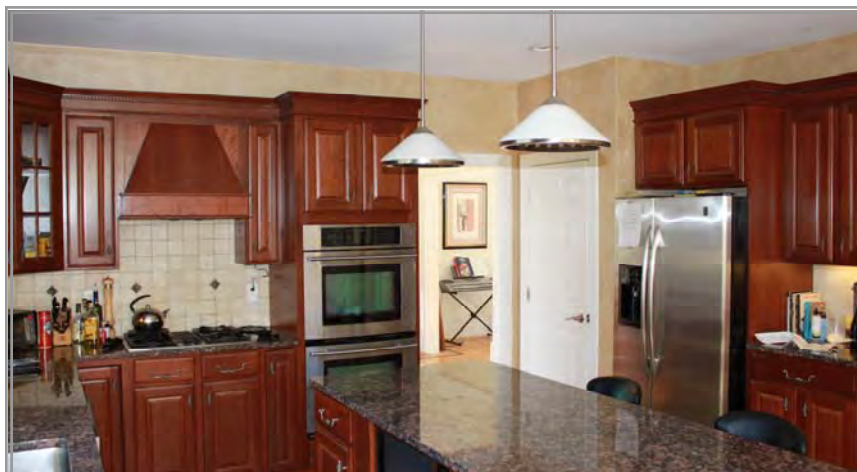
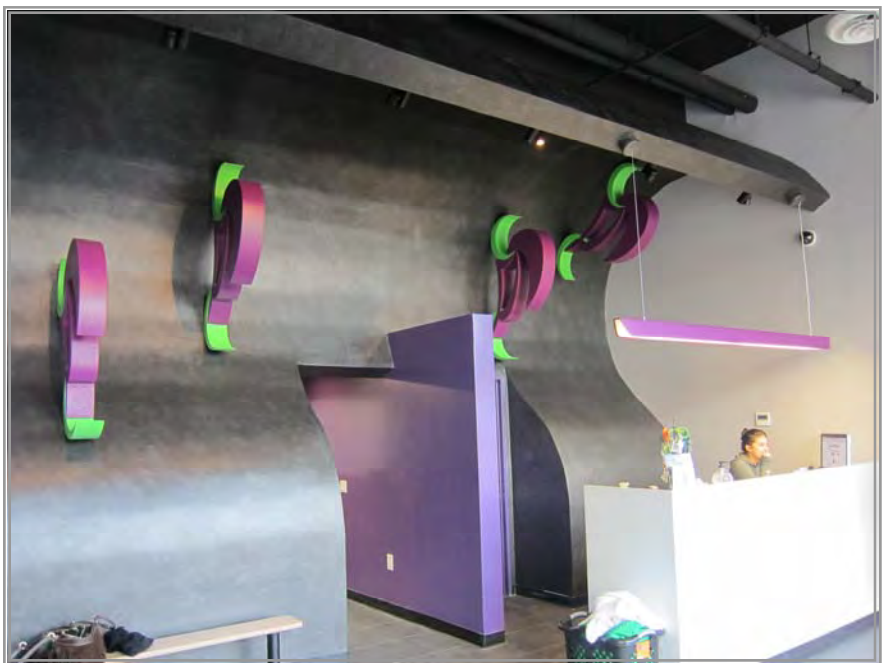
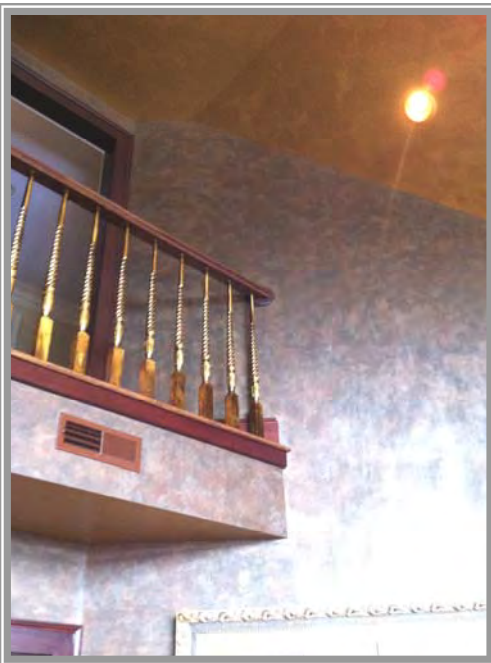
# KLONDIKE® LIGHT

Subtle elegance!

Klondike Light provides 57 tonal variations within the standard color palette. Variegated effects may include gold and silver highlights as well as the decorative STAR effect.

The application technique is the same as traditional KLONDIKE, making installation easy with only basic painting skills. Simply apply two coats of Klondike over our primer by either brush or faux finishing trowel.

Unlike some contemporary sophisticated paint materials, KLONDIKE is as easy to repair if damaged as it is to install the original material. Simply brush the material onto any damaged area for an invisible repair. Poly-Glaz, an optional clear urethane is available for improved scratch resistance.



## Collection of Joy™ - Metallic

Available in over 190 metallic tones of silver and gold, and numerous subtle patterns, Collection of Joy is an incredibly versatile metallic paint. Like our materials, this collection is highly washable, color fast and easy to apply. With over 5000 scrub cycles, Collection of Joy will stand up to “high-touch” commercial areas without burnishing. At right Collection of Joy is used in elevator cab interiors and below it is on the headboard walls in the guestrooms of a busy hotel. This hotel selected our *Raw Silk* pattern - a vertical ribbed pattern.

