

TRIARCH
ARCHITECTURAL
FINISHES

WWW.TRIARCHINC.COM

Coatings Design™

Performance Coatings Achieve High Grades

Like the Federal government, the educational construction marketplace seeks to build and renovate with long lasting, high performance materials. Durability in the form of abrasion and impact resistance are necessary product characteristics in the product selection criteria. Additional product features such as meeting LEED criteria, zero to low maintenance requirements are necessary product attributes for products used on busy campuses.

Key products from Triarch that support these fundamental educational construction requirements are: Duroplex®, Plexture®, Granyte®, and SKIMM™.

Projects utilizing Duroplex on cover: University of Tampa, University of Houston, Tennessee Tech University and the University of Wisconsin



Active campus sports facilities are a focal point for student activity. Typically serving the dual purpose of sports center and a campus entertainment venue, these facilities are subjected to enthusiastic crowds.

This page features The Bob Martinez Athletic Center at the University of Tampa, The Eblen Center at TTU and the Garfield H.S. (Seattle) great room.

Project substrates ranged from CMU, to glazed block to wallboard.

Duroplex—the high performance leader.

Aesthetically pleasing, abrasion & impact resistant, 80% as hard as mild steel

Whether it is new construction or renovation, the Duroplex system provides a compelling argument for wide scale use. Appropriate for use over either masonry or wall board construction, Duroplex delivers durability and aesthetics to the student union, sports center, dormitory or classroom.



Featured Project:

TTU TENNESSEE TECH
UNIVERSITY

The Princeton Review consistently names Tennessee Tech University one of the best in the Southeast. TTU offers students the true college experience. With more than 11,000 students, TTU is a comprehensive university offering more than 40 bachelor's and 23 graduate degree programs within six academic divisions.

With an expanding student population and a campus that was created over time, Tennessee Tech was looking for a versatile, durable material that worked on varied substrates. TTU wanted to unify the interior design theme of its many existing buildings and eliminate the appearance of CMU. Ideally this material would also work well in the various new buildings under construction. The solution was the Duroplex and Plexture systems; providing a long life wall surface within budget criteria. Shown below are several shots from the School of Nursing at TTU that utilized Triarch materials. .



- Additional
- Coatings Design™
- Publications:
- ⇒ Duroplex
- Performance
- ⇒ Plecture
- ⇒ Grantye
- ⇒ Elegance
- ⇒ Masonry
- Construction
- ⇒ Residential

Featured Project:



Saint Michael's College is a community of 2,000 undergraduate students, 150 faculty members, and associated staff at a challenging, selective Catholic college on a 440-acre green campus overlooking the Green Mountains and Burlington, Vermont. <http://www.smcvt.edu/>

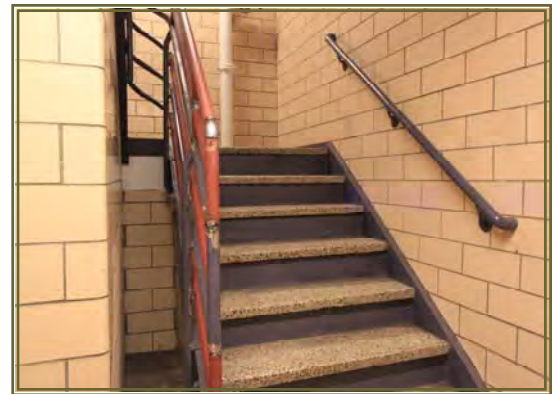
In 2012 St Michael's went searching for an answer to upgrade several of their older dormitories properties during the 2013 summer break. The challenge involved selecting a material that would not only provide years of long term durable service in the active dorms, but ideally it would be a product that could be applied to the original glazed tile in the corridors of the dorms.

After consulting with local contractors, St. Michael's happened upon the Duroplex System as a likely answer to resurface the aging glazed tile surfaces as well as the painted CMU. Not only did the Duroplex System have the performance attributes important to St. Michael's, but the contractors suggested it would save the college construction funds by not having to remove or even scarify the fired glaze on the facing blocks.

In the fall of 2012 a sample area was installed at a busy student dormitory entrance to evaluate the products' ability to handle the substrates and the comings and goings of active students. The result: St Michael's College elected to install the Duroplex System in two multi-story dormitories in the summer of 2013.



Typical dormitory corridor with glazed facing



Typical stairwell corridor in dormitory

**Before
remodel**

Typical ground floor entrance — left wall

Typical ground floor entrance — right wall





“The Quad”....a banner map provided to the students showing a hard hat and designating the buildings for renovations.

Shown below is Joyce Hall, one of the dorms under renovation.



A warmer more inviting residential décor:

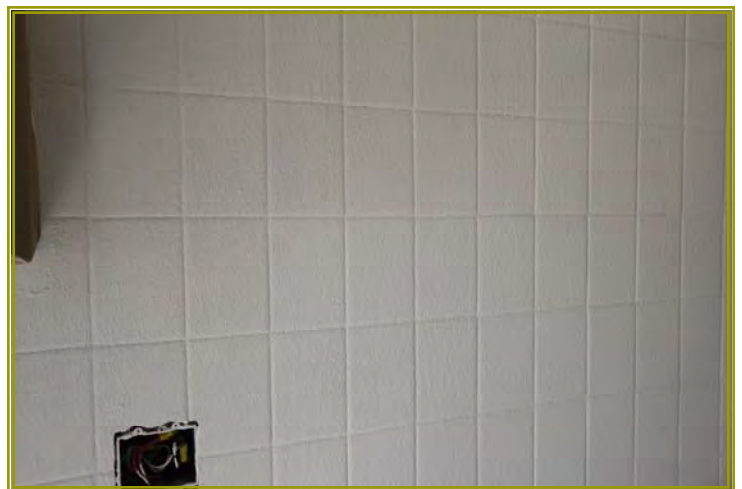
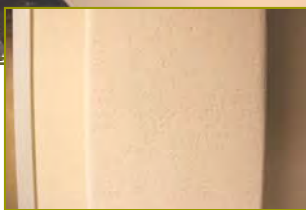
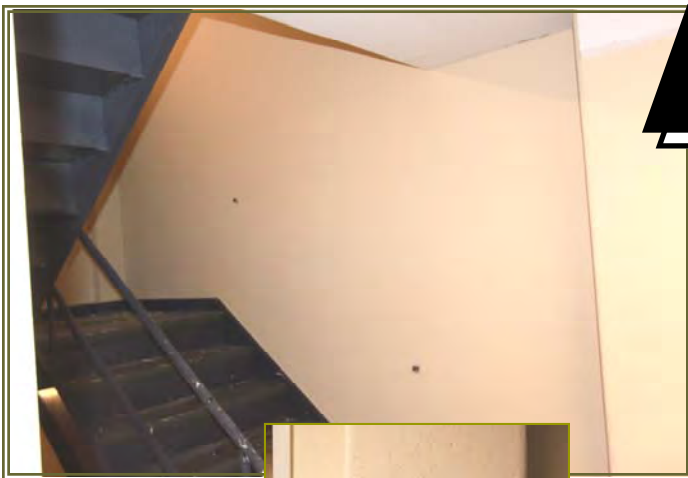
Left: corridor after installation of the special primer, SKIMM & the Duroplex System in an *Antigua DS II* pattern.

The stairwells now sport a single color Duroplex finish called *Tight Knock Down Fissured*.



Below: The use of Triarch’s special bonding primer allowed the installer, Finishes Etc LLC, to rapidly apply product directly to the glazed tile, saving the project time and money. No grinding or scarifying of the glazed block or tile, no dust; just roll on the Primer.

Almost complete

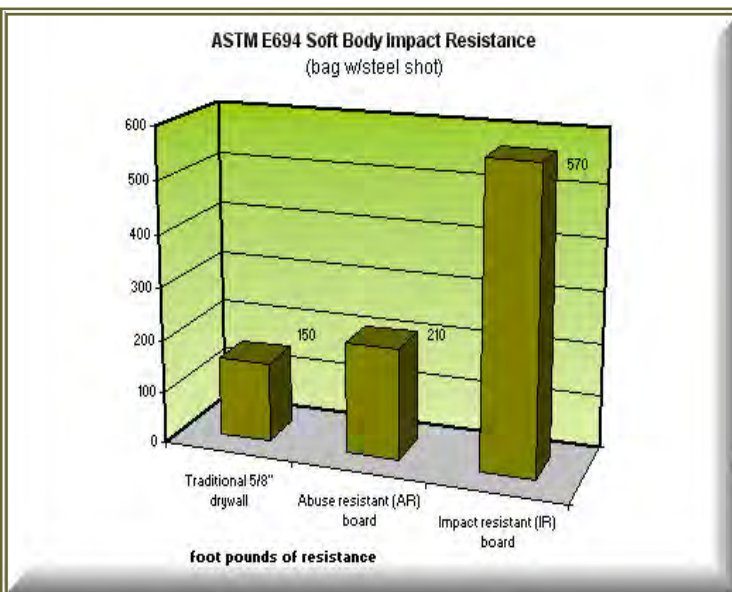
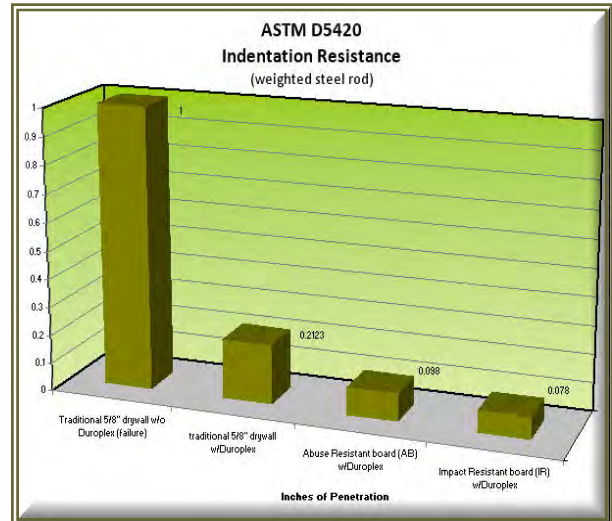
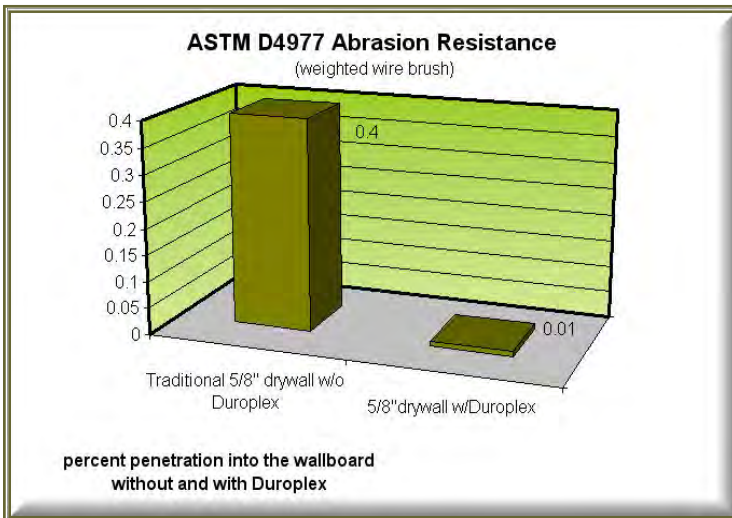




ABUSE RESISTANCE: The Duroplex system significantly improves the **abrasion and impact resistance** of 5/8" drywall. Additional performance results are achieved when Duroplex is placed over abuse or impact resistant wall board; **substantial gains in the resistance to both piercing and soft body impact are realized.** The QR code at right provides a quick link to our collaborative study with Georgia-Pacific on the performance results of Duroplex over various wall board substrates.

This study is also on our website under:
PRODUCTS/DUROPLEX/ABRASION AND IMPACT

- ⇒ ASTM D4977 Abrasion test: **lower is better**
- ⇒ ASTM D5420 Indentation test: **lower is better**
- ⇒ ASTM E 694 Soft Body Impact test: **higher is better**



The Duroplex System
with **DensArmor Plus**
Abuse Resistant or Impact Resistant Panels

As the world's leading manufacturer of wallboard, we understand the challenge of how to design elegant interiors that require a high level of abuse and impact resistance. Medical, school, institutional, retail and sporting facilities are just a few examples of building types that need to be designed for high traffic situations.

The Duroplex System uses DensArmor Plus along with a higher level of abuse resistance and impact resistance than traditional wallboard, high performance joints or competing brands. New test data supports the claim that the Duroplex system provides superior performance in terms of abuse resistance to these high performing board substrates, providing excellent and durable wall functional design alternatives for high traffic areas.

TriArch recently teamed with Georgia-Pacific Gypsum to test the Duroplex system installed over DensArmor Plus Abuse Resistant and Impact Resistant wall panels. Superior wall finishing systems provide excellent wall abuse resistance to these high performing board substrates, providing excellent and durable wall functional design alternatives for high traffic areas.

Call 1-800-337-4111 or visit www.duroplex.com to learn how you can use the Duroplex System with DensArmor Plus to deliver great interior and high traffic wall performance today.